

Honeywell

LED INDOOR/OUTDOOR STRING LIGHTS MODEL: ST136A11XXXX USE AND CARE GUIDE



International Development, LLC.
899 Henrietta Creek Rd. Roanoke, TX 76262 USA
Toll-free: 1-877-723-0723

© 2016 IDC, all rights reserved.
The Honeywell Trademark is used under license from Honeywell International Inc.
Honeywell International Inc. makes no representations or warranties with respect to this product.
This product is manufactured for International Development, LLC.

INSTALLATION

Congratulations on your recent purchase of the LED String Lights. LED String Lights are designed to provide lighting for life with no bulbs to replace again! Purchase additional lights to form one continuous string up to 540 feet!

Model#	Length (ft)	Bulb Spacing	Input (watt)	No. Bulb
ST136A11XXXX	36	1.97 ft	9W	18

STEP 1: INITIAL SETUP

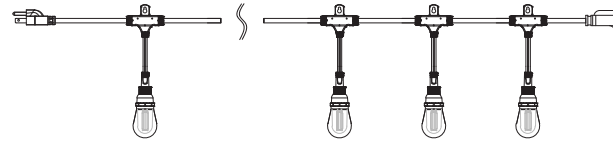
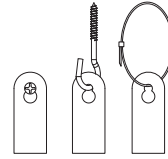
- Carefully unpack String Lights from box. Remove the wire ties and the protective film from string light first, then remove protective film from each bulb. Dispose of film properly (see warning).
- When installing String Lights outside, a Ground Fault Circuit Interrupter (GFCI) receptacle should be used. Before installing, plug the String Lights into the GFCI receptacle to ensure all lights work properly.

IMPORTANT: Unplug the String Lights prior to mounting.

INSTALLATION

STEP 2: INSTALLING STRING LIGHTS

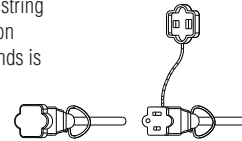
- IMPORTANT:** Only mount String Lights to a solid support such as joists, beams, studs or other solid mounting surfaces.
- Each String Light is designed with a universal keyhole for mounting with lights hanging downward. Hardware options (not included) screws, nail, zip ties, hooks and more.
- Guide wires in compliance with local electrical and building codes may also be used to support the String Lights.
- Once appropriate GFCI outlet location, mounting surface and hardware are determined, mount your String Lights.
- When finished mounting, plug the male plug into the GFCI receptacle and place the female receptacle cover firmly over the unused outlet.



STEP 3: INSTALLING MULTIPLE STRING LIGHTS SETS

Extend the length of your lights by connecting more than one strand together to form one continuous string up to 540 feet! Simply follow the above installation steps making sure each connection between strands is secure and the end female receptacle is securely covered using the receptacle cover when done.

NOTE: Always unplug string light from outlet before connecting additional string light.

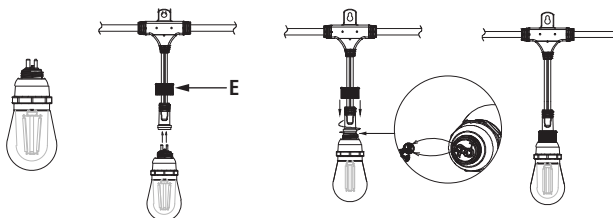


STEP 4: REMOVING STRING LIGHTS SETS

- Always unplug String Lights from their receptacle prior to removing.
 - Carefully remove each light individually from the mounting hardware.
- NOTE:** For your safety, never pull or jerk lights from mounting hardware.
- Store lights in a dry location.

REPLACING BULBS

- Unplug light strand from power outlet.
 - Unscrew cap (E) to reveal light bulb.
- NOTE:** UNSCREW CAP (E) ONLY, DO NOT TWIST THE LIGHT BULB.
- Carefully remove light bulb and discard.
 - Align 2 pins of replacement bulb with 2 holes on light strand and gently push pins into holes. Match N/L marking on string with N/L on bulb to install correctly.
 - Screw cap (E) back tightly but do not over tighten.
 - Plug in light strand.



SAFETY INFORMATION

IMPORTANT: Read all safety precautions and installation instructions carefully before installing or servicing this fixture. Failure to comply with these instructions could result in a potentially fatal electric shock, fire, and/or property damage. In order to insure proper installation, please follow each step below:

FCC WARNING:

This device complies with Part 15 of the FCC Rules. Operation is subject to the following two Conditions:
(1) This device may not cause harmful interference, and
(2) This device must accept any Interference received, including interference that may cause undesired operation.

WARNING

RISK OF ELECTRIC SHOCK

- *RECEPTACLE OUTLETS USED FOR POWERING STRING LIGHTS SHALL COMPLY WITH ALL NATIONAL AND LOCAL ELECTRICAL CODES.
- *CONSULT LOCAL ELECTRICIAN IF UNSURE OF COMPLIANCE REQUIREMENTS.
- *DO NOT SUBMERSE.
- *DO NOT USE AROUND AQUARIUMS.
- *STRING LIGHTS ARE A WET LOCATION PRODUCT AND HAVE NO REPLACEABLE OR SERVICEABLE PARTS.
- *DO NOT USE WITH EXTENSION CORD NEAR WATER OR WHERE WATER MAY ACCUMULATE.
- *KEEP LAMPS AT LEAST 16 FEET FROM POOLS AND SPAS.
- *KEEP PLUGS AND RECEPTACLES DRY.
- *AVOID DAMAGE TO THE CORDS AND LAMP ASSEMBLIES DURING INSTALLATION. PERIODICALLY INSPECT THE STRING LIGHTS FOR PHYSICAL DAMAGE OR OTHER DAMAGE CAUSED BY OUTDOOR EXPOSURE TO THE ELEMENTS.
- *REPLACE ANY DAMAGED STRING LIGHTS STRINGS.
- *DO NOT INSTALL IN LOCATIONS WHERE STRING LIGHTS CAN BE STEPPED ON.
- *STRING LIGHTS ARE UNPLUGGED FROM POWER DURING INSTALLATION.
- *STRING LIGHTS SHOULD BE INSTALLED OUT OF THE REACH OF CHILDREN OR NOT ALLOWING CHILDREN TO PLAY WITH THEM.

RISK OF FIRE

- *STRING LIGHTS ARE DESIGNED TO BE MOUNTED WITH THEIR INDIVIDUAL KEYHOLE MOUNTING FEATURE. DO NOT MOUNT STRING LIGHTS BY USING THE MAIN ELECTRICAL CORD OR THE INDIVIDUAL DROP CORDS.
- *STRING LIGHTS ARE DESIGNED TO BE LINKED BY USING THEIR ELECTRICAL PLUGS AND RECEPTACLES TO A MAXIMUM DISTANCE OF 540 FEET.
- *STRING LIGHT INTERCONNECTING RECEPTACLES ARE INTENDED ONLY FOR THE LINKING OF COMPATIBLE STRING LIGHT STRINGS. DO NOT USE STRING LIGHT RECEPTACLES FOR ANY OTHER ELECTRICAL PURPOSE.
- *DO NOT MOUNT STRING LIGHTS IN ANY POSITION WHERE THE BULB IS FACING UP.
- *DO NOT ALLOW THE LED LAMP ASSEMBLIES TO BE IN CONTACT WITH COMBUSTIBLE MATERIALS. LED LAMP ASSEMBLIES SHOULD HANG FREELY AND NOT BE SUSCEPTIBLE TO REPETITIVE DAMAGE CAUSED BY ENVIRONMENTAL CONDITIONS SUCH AS WIND, RAIN, AND ICE.
- *NOT INTENDED FOR INSTALLATION IN CEILINGS, SOFFITS, CABINETS, ATTICS, OR OTHER ENCLOSED SPACES.